

Change it.  
Change everything.

**Revit®**

Architecture 2008

Autodesk®

# Simply a Better Way of Working

Revit® Architecture software works the way you think. The innovative building design and documentation system helps you work naturally, design freely, and deliver efficiently.

Purpose-built for building information modeling (BIM), Revit Architecture mirrors the real world of buildings, so you work holistically, rather than with isolated elements such as floor plans, sections, and elevations. And with parametric change technology any change you make, anytime, anywhere, is automatically coordinated everywhere in your project—model views, drawing sheets, schedules, sections, and plans—you name it. Design and documentation stay coordinated, consistent, and complete.

## Bidirectional Associativity

A change anywhere is a change everywhere. All Revit Architecture model information is stored in one place. As a result, any information that gets changed is effectively changed throughout the model. For instance, sections and elevations are computed on demand in a fraction of the time required to draw the sections by hand or with traditional computer-aided design (CAD) applications. Revit Architecture helps to ensure that building sections and elevations are immediately available, up-to-date, and accurate.

## Parametric Components

Parametric Components, also known as families, are the basis for all building components designed within Revit Architecture. They offer an open, graphical system for design thinking and form making as well as an opportunity to express design intent at increasingly detailed levels. With no need for programming language or code, you can use Parametric Components for the most elaborate assemblies, such as cabinetry and equipment, as well as for the most elemental building parts, such as walls and columns.



**Building information modeling (BIM)** is the creation and use of coordinated, consistent, computable information about a building project in design—information used for design decision-making, production of high-quality construction documents, predicting performance, cost-estimating, and construction planning, and, eventually, for managing and operating the facility.

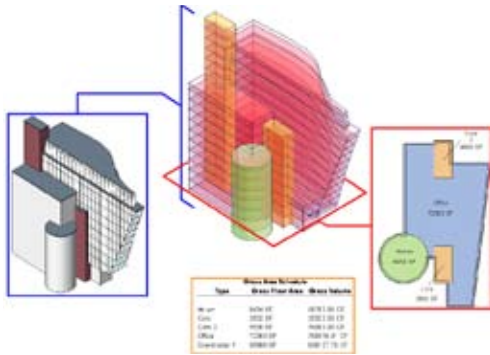
# Works the Way You Think

## With Revit Architecture, you get back to what you love: designing buildings, without having your software get in the way.

Work in any view that makes sense, maintain the ability to design throughout different design phases, and quickly and easily make changes to major design elements. Create comprehensive design proposals in record time. See your ideas realized on the fly with 3D views and instant shadows. You can even make late-stage changes without worrying about coordinating your plans, schedules, and construction documents.

### Revit Building Maker

Access a better workflow for common conceptual and schematic tasks. Easily create expressive forms to produce an overall massing study. Import conceptual massing from applications such as Form-Z, Rhino, Google™ Sketchup®, and AutoCAD® 2008 software, or other ACIS® or NURBS (nonuniform rational B-spline) based applications. Turn them into mass objects in Revit Architecture. Then select faces to design walls, roofs, floors, and curtain systems. You can even use tools to extract important information such as gross area per floor.



### Stacked Walls and Vertically Compound Walls

This wall type is ideal for walls of varying thickness and vertical materiality. Use Revit Architecture to stack different wall types and control them as one entity.

### Family Editor

A graphical editing mode for the creation of parametric components, the Family Editor enables easy creation, customization, and direct loading of doors, windows, annotation types, and virtually anything else.

### ENHANCED Revit Groups

Revit Groups provide a modular design technique ideal for building types comprising many rooms of similar size, shape, or configuration, such as hospitals, hotels, and apartment buildings. New workflow enhancements include the ability to load an RVT file as a group, save a group as an RVT, or change a group to a linked file. Additional enhancements include a new Group Edit Mode, which provides for the creation of elements while editing a group, numerous user interaction improvements, and the ability to exclude elements on an instance basis to accommodate special conditions.



### Rooms

Add flexibility to your model by calculating precise area and room volumes. Capabilities include the consideration of rooms that extend through multiple floors. Easily identify and track rooms between schedules and model views, accelerating analysis and presentation. Gain added productivity when rooms automatically update with design changes.

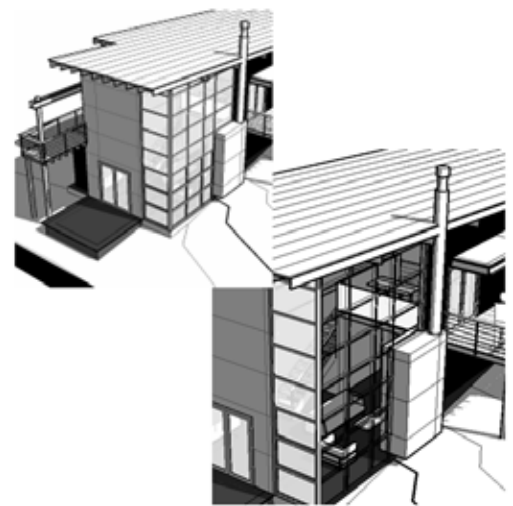
### Sun Studies

Revit Architecture sun studies enable designers to quickly analyze sun positions and solar effects while informing and influencing design strategy. Choose a specific date and time, or time frame, to generate a still or animated sun study.



### ENHANCED Graphical Overrides

Graphic overrides provide an ability to modify the graphic representation for a single element, thereby offering additional options for how elements appear in views. Graphic overrides also provide a visual method for hiding or revealing single elements or groups of elements by view. Settings are visually retained from session to session, reducing setup time in anticipation of plotting and printing.



### ENHANCED Color Fills

Color fill enhancements provide better control over the creation, management, and display of color fill patterns. Because the software offers more options for conveying design ideas in plan, Revit families such as furniture, equipment, and floors no longer hide behind color fills. Maximizing valuable drawing real estate, the color fill legend reports only those color fills represented in the active view.



# Better Coordination and Quality

## Ever feel like you spend too much time updating documents and ensuring accuracy? Not any more.

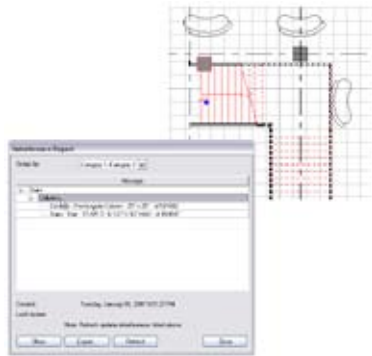
With Revit Architecture software's parametric change management, you can coordinate your entire project effortlessly. Enhance client communications and accelerate decision making. Get timely feedback on project design, scope, schedule, and budget. And do it all while minimizing the costly mistakes and wasted effort that come from coordinating documents by any other means.

### ENHANCED Schedules

Schedules are just another view of the Revit Architecture model. Changes to a schedule view are automatically reflected in every other view and vice versa. Functionality includes associative split-schedules and the ability to schedule elements based on conditional filtering. Enhancements include the scheduling of wall sweeps and additional linked file information.

### Interference Check

Use interference checking to scan your model for collisions between elements.



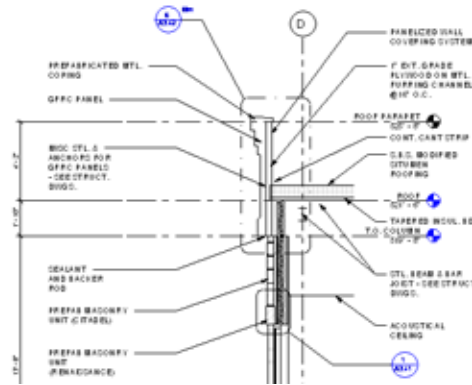
### Site Terrain Surfaces

Provide site context for the building, and create all contour lines and hatch patterns in sections and elevations, saving time and minimizing tedious hatching chores.



### Detailing

Take advantage of the extensive detail library and detailing tools provided with Revit Architecture 2008. Presorted to align with the CSI format, detail libraries can be tailored to accommodate your office standards. Create and share your own detail library.



### Coordination Monitor

Coordinate changes across models. Work smarter with engineers from other disciplines. Monitor changes to grids, levels, columns, walls, and slabs. Approve or reject changes and attach comments for review.

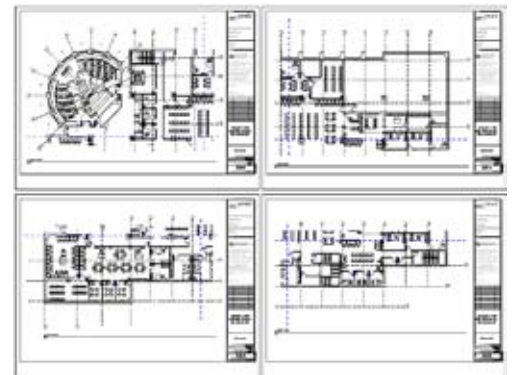


### Material Takeoff

Calculate detailed material quantities with the Material Takeoff tool. Appropriate for applications such as sustainable design, and checking material quantities in cost estimates, Material Takeoff simplifies the tracking of material quantities. As a project evolves, the Revit Architecture parametric change engine helps to ensure that material takeoffs are always up-to-date.

### NEW Dependent Views

Addressing the needs of firms managing large projects, dependent views provide a robust mechanism for segmenting projects across multiple sheet views. Coordination across sheets is automatically maintained between parent and dependent views, helping to ensure model fidelity. All building information, including annotations, is kept accurate and up-to-date throughout the design process.



### NEW Masking Regions

Masking regions provide an easy method for managing the visual display of Revit family information. Delivering added benefit over filled regions, masking regions help to maintain visual accuracy when translating between Revit Architecture and AutoCAD-based applications.



### ENHANCED File Linking

Offering more flexibility and easier management of linked model information, Revit links are organized within the project browser to provide new drag-and-drop management, together with quick and easy access to the Link Manager. Project visibility is significantly improved for the project team by displaying nested links within host files. The functionality of color fills is also enhanced as fills within host files are applied in linked views.

# Better for Your Business

## Clients never expect less—they always want more.

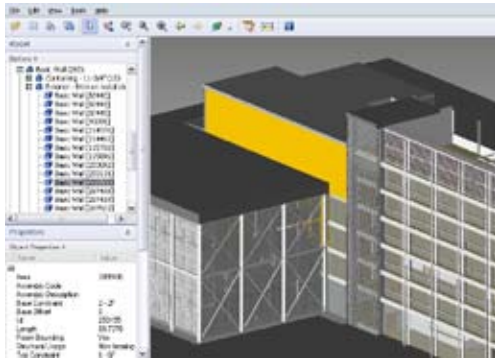
With Revit Architecture software's timesaving workflow, you exceed their expectations by delivering more-complete documents and higher-quality designs. Win more business with clear and complete presentations. Integrate better with the other Autodesk products in your workflow. And streamline your processes—whether you're going it alone or collaborating with a large team. With Revit Architecture, you keep your clients coming back again and again.

### Revit Worksharing

Revit Worksharing distributes the power of the Revit Architecture parametric modeling environment across the project team. Worksharing provides a complete range of collaboration modes from entirely on-the-fly, simultaneous access to the shared model, through the formal division of the project into discrete shared units, to a complete separation of project elements or systems into individually managed linked models. Worksharing allows the team to choose the best way to collaborate and interact based on workflow and project requirements.

### Autodesk Design Review

Accelerate reviews with the free\* Autodesk® Design Review software, the all-digital way to review, mark up, and track changes to 2D and 3D designs without the original design creation software. Because the Design Review markup capabilities combine with Revit Architecture navigation and revision management capabilities, tracking changes is easy. There's no need to reenter information. This capability provides high-impact, dynamic communication of design information in a lightweight format. It's great for including nontechnical participants in the project review process.



\*This product is subject to the terms and conditions of the end-user license agreement that accompanies download of this software.

### Revit Structure and Revit MEP Interoperability

Use a shared model or cross-linked models to coordinate with structural engineering partners using Revit® Structure software, or with MEP engineering partners using Revit® MEP software.

### Design Options

Develop and study multiple design alternatives as an integrated piece of the larger building model. Present any combination of schemes to your client. Substitute each option into the model for visualization, quantification, and other data analysis to inform decision making.



### Publish to Autodesk Buzzsaw

The Publish to Autodesk® Buzzsaw® functionality enables you to easily upload a file from Revit Architecture to a Buzzsaw project site. Added functionality allows for automatic conversion of Revit Architecture files to either DWG™ or DWF™ files. With the addition of default template assignments, you can assign properties to a view and set those properties back to their original state before publishing or printing your project.

### Interface to Energy Analysis (gbXML)

Export building information, including materials and room volumes, to green building extensible markup language (gbXML). Perform energy analysis and study building performance using services from Green Building Studio, Inc. and IES Ltd. Revit Architecture 2008 is optimized for IES VE 5.7.

### ENHANCED DWG, DXF, DGN (v7) Support

Revit Architecture imports, exports, and links your data with the industry's best DWG compatibility. Native support for DWG, DXF™, and MicroStation® DGN formats helps assure fully compatible data exchange for smooth coordination between team members, including engineering consultants.

### ENHANCED Autodesk VIZ 2008 and Autodesk 3ds Max 9 Interoperability

Use Autodesk® VIZ 2008 or Autodesk® 3ds Max® 9 software to import or link 3D DWG files produced with Revit Architecture. Maximize workflow efficiency by sharing model geometry, materials, and camera positions throughout the iterative design process. Create stunning photorealistic interior and exterior renderings to help sell your design ideas.



### ENHANCED Industry Foundation Classes (IFC)

Revit Architecture offers better support for information exchange. IFC import/export capability is based on the International Alliance for Interoperability (IAI) IFC 2x3 data exchange standard.

### NEW Communication Center

The Communication Center is a web-based notification feature built into the Revit Architecture software application. When users are connected to the Internet, the Communication Center delivers up-to-the-minute information regarding product support, subscription news, and articles and tips. Whenever new information becomes available, the Communication Center provides a convenient notification using the status bar on your workstation.

### NEW Google Earth Plug-in (Available through Autodesk® Subscription)

Publish 3D building information models directly from Revit Architecture into Google Earth™ mapping service. Streamline the preliminary project planning process by sharing conceptual plans with your clients in real time. Connect everyone involved in your project from the planning stage through public approval.

In Revit Architecture every schedule, drawing sheet, 2D view, and 3D view is a direct presentation of information from the same underlying database. As you and your team work on the same building information, Revit Architecture automatically coordinates changes across all other representations of the project.

**AutoCAD Revit Architecture Suite  
(Formerly Autodesk AutoCAD Revit Series—Building)**

AutoCAD® Revit® Architecture Suite is a bundle consisting of Revit Architecture and AutoCAD software with a single serial number and a single authorization code. This combination enables you to maintain your investment in technology and training, while offering the competitive advantage of building information modeling, and provides the flexibility to move to a new technology platform when you're ready. For more information, visit [www.autodesk.com/revitarchitecturesuite](http://www.autodesk.com/revitarchitecturesuite).

**Autodesk Services and Support**

Accelerate return on investment and optimize productivity with innovative purchase methods, companion products, consulting services, support, and training from Autodesk and Autodesk authorized partners. Designed to get you up to speed and keep you ahead of the competition, these tools help you make the most of your software purchase—no matter what industry you're in. To learn more, visit [www.autodesk.com/servicesandsupport](http://www.autodesk.com/servicesandsupport).

**Autodesk Subscription**

Ensure competitive advantage by keeping your design tools, and your design skills, up to date easily and cost-effectively with Autodesk Subscription. Get the latest versions of your licensed Autodesk software, incremental product enhancements, personalized web support direct from Autodesk, and self-paced training options with one annual fee. To learn more, visit [www.autodesk.com/subscription](http://www.autodesk.com/subscription).

**Learn More or Purchase**

Access specialists worldwide who can provide product expertise, a deep understanding of your industry, and value that extends beyond your software purchase. To purchase Revit Architecture or AutoCAD Revit Architecture Suite, contact an Autodesk Premier Solutions Provider or Autodesk Authorized Reseller. To locate the reseller nearest you, visit [www.autodesk.com/reseller](http://www.autodesk.com/reseller).

For more information about Revit Architecture software, visit [www.autodesk.com/revitarchitecture](http://www.autodesk.com/revitarchitecture). To learn more about Autodesk Architecture Solutions, visit [www.autodesk.com/building](http://www.autodesk.com/building).

Cover rendering courtesy of Delta Tracing.